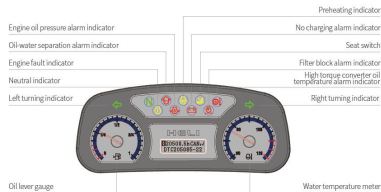


## Reliable special designed instrument



Reliable special meter display the whole truck's working condition, fault detect and other important information completely which make the operator master the whole truck condition directly and conveniently.

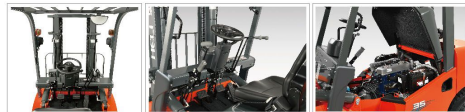
Standard configuration	Optional	Available attachment
Fork Water temperature gauge Traction pin Backrest Overhead guard Electric horn Reversing light Hour meter Fuel gauge Charging indicator Operator's tool kit Oil pressure alarm Steering indicator Wide view mast Standard seat Front lamp Rear combined light Shaped pedal pad Control valve (two throws)	Filter core of transmission oil Backward buzzer Transmission oil gauge Filter of hydraulic oil circuit Safety switch for neutral gear Rain proof for overhead guard Air intaking device Durable tyre with pattern Cable type parking brake Hydraulic oil gauge Preheating indicator Full hydraulic powered steering Flow regulator for lifting oil circuit Levers for lifting and tilting Cyclone air cleaner Adjustable tilting steering column Engine automatic preheating system Electric flameout Engine fault indicator	Cab Speedometer Fire extinguisher Solid tyre Rear working light Auxiliary pipe Suspension seat Custom paint Temperature gauges of transmission oil Heater High installed exhaust Sleeve of tilting cylinder Smart fleet management system (optional) Carpet boom Lifting hook Side shifter Paper roll clamp Rotating fork Cargo boom Lengthen fork Multi-function drum clamp Rotating clamp Widen fork carrier Lengthen fork extension Load stabilizer Push-pull Tilting fork/bucket Wide view two stage free lift mast Wide view three stage free lift mast

## 2-3.5 t

### K2 series Internal Combustion Counterbalanced Forklift Truck



## K2 SERIES 2-3.5 t



### Reliability improved

- Casted steering axle
- Improved mast strength and rigidity
- Reduced front overhang improves truck stability.
- The sealing performance of drive axle is improved.
- Enhanced design of rim.
- The strength and rigidity of overhead guard are improved.
- The protection level of electric system is improved and the electrical parts adopts modular design.
- The 24° conical sealing is adopted on the hydraulic pipeline and the sealing performance is improved.
- The cooling performance of the truck is improved.
- The loading capacity of mast and frame is improved and the safety performance is improved.

### Better performance in energy saving and consumption reducing

- The oil consumption is reduced.
- The pressure loss is reduced.
- LED lights are standard.

### The operation efficiency improved

- The lifting speed improved.
- The steering radius is small.
- The lights switch is integrated on steering knob and it is convenient for operation.

### Operation comfort improved

- The diameter of steering wheel is reduced to reduce arm fatigue.
- The space for pedal is enlarged.
- Seat is design with man-machine engineering.
- Backlight design of meter is easy to read and engine fault code is shown on the meter.
- The horizontal view of mast is improved.
- Lowering buffering is configured.
- Head space is enlarged.

### The performance of easy maintenance is further improved

- The drive axle is improve to reduced maintenance frequency.
- Fault code is displayed on the meter to improve truck maintenance efficiency.
- Large opening angle of engine hood makes maintenance easier.
- The contact space between engine and transmission box is enlarged and it is easy for engine oil filter maintenance.
- Integrated electric box is easy for maintenance.
- The 24° conical sealing is adopted on hydraulic pipeline and it is easy for assembly and disassembly.

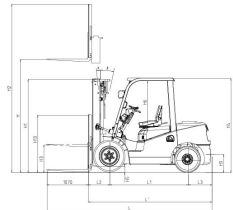


#### HELI smart fleet management system (optional)

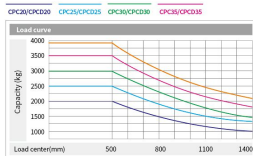
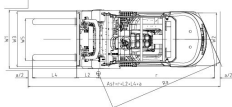
Vehicle positioning	Statistical form
Remote diagnosis	Vehicle management
Remote monitoring	Identification recognition (optional)
Maintenance reminder	Weight management (optional)
Battery management	Collision management (optional)

Manufacturer and technical parameters

Characteristics		HELI					
Model		CPC20	CPCD20	CPC25	CPCD25	CPC30	CPCD30
1.02 Rated capacity	kg	2000		2500		3000	3500
1.14 Load center	mm	500		500		500	500
1.05 Driving mode		Diesel					
1.16 Power type		Stb. outtype					
Dimensions							
2.01 Lifting height (standard)	H mm	3000		3000		3000	3000
2.02 Mast overall height (fork to the ground/mat/beverage)	H1 mm	2000		2000		2070	2120
2.03 Max fork lifting height (with backrest)	H2 mm	4030		4030		4217	4217
2.04 Free lift height	H3 mm	150		150		155	160
2.05 Overall height (Overhead guard)	H4 mm	2120		2120		2140	2140
2.06 Min. ground clearance (At the mast)	H5 mm	115		115		135	135
2.07 Distance from the surface of the seat to the overhead guard	H6 mm	1050		1050		1050	1050
2.08 Traction pin height	H8 mm	290		290		310	310
2.09 Backrest height (Calculated from the surface of the fork)	H3 mm	1000		1000		1182	1177
2.10 Overall length (With fork/Without fork)	L1/L2 mm	3460/2540	3680/2610	3814/2744		3820/2750	
2.11 Wheel base	L mm	1650		1650		1750	1750
2.12 Front overhang	L3 mm	465		465		478	484
2.13 Rear overhang	L4 mm	425		495		520	520
2.14 Overall width	W1 mm	1160		1160		1225	1225
2.15 Tread (Front tread/Rear tread)	W2/W3 mm	970/970		1000/970			
2.16 Fork adjustable angle (the minimal of the fork) (Min./Max.)	W5 °	1030/244		1030/244		1060/250	1060/250
2.17 Min. turning radius (Exterior)	r mm	2215		2270		2400	2400
2.18 Min. turning radius (Interior)	r mm	35		35		80	80
2.19 Min. right angle stacking aisle width	Ra mm	2235		2290		2360	2360
2.20 Mast tilting angle (forward /rear)	α/β °	6°/12°		6°/12°		6°/12°	6°/12°
2.21 Fork size	L4/W4 mm	920x122x40		1070x122x40		1070x125x45	1070x125x50



RASA: Right angle stacking aisle width as Clearance  
L4: Length of fork



Note: The vertical axis stands for load capacity and the horizontal axis stands for load center which is calculated from the front of the fork. The base point of the standard load refers to the center position of the cube with 1000mm length of side. When mast is tilted forward, nonstandard fork usage or load with over wide goods, load capacity will be reduced. Different load capacity in different load center can be known in time through load chart.

Truck main specifications and drive and transmission control device

Model	CPC20	CPCD20	CPC25	CPCD25	CPC30	CPCD30	CPC35	CPCD35	CPC20	CPCD20	CPC25	CPCD25	CPC30	CPCD30	CPC20	CPCD20	CPC25	CPCD25	CPC30	CPCD30	CPC35	CPCD35
Max. Travelling speed (loaded/unloaded)	18/18		18/18		19/19		19/19		18/19		18/19		19/20		18/19		18/19		18/19		18/19	
Lifting Speed (Loaded/Unloaded)	500/550		500/550		475/495		400/420		500/550		500/550		455/480		455/480		400/420		455/480		400/420	
Lowing Speed (Loaded/Unloaded)	450/500		450/500		450/500		450/500		450/500		450/500		450/500		450/500		450/500		450/500		450/500	
Max. drawbar pull (Loaded/Unloaded)	17/12		17/12		18/12.5		18/12.5		19/15		19/16		19/16		16.2/12.5		16.2/12.5		19.3/11.7		19.3/11.7	
Max. Gradeability (Loaded/Unloaded)	%		27/29		27/31		25/23		31/23		22/23		22/26		20/22		20/25		18/29		26/32	
Drive and transmission control device																						
Battery (Voltage/Capacity)	V/Wh										12/80											
Engine manufacturer / mode	QUANCHAI 4C2-50C41										ISUZU C240											
Rated power/Speed	kW/rpm										36.8/2500											
Max. torque/Speed	Nm/rpm										170/1400-2000											
Cylinder number - Bore x Stroke/Displacement	/L										4-96x105/2.67											
Engine fuel tank capacity	L										70											
Emission	China Stage II										China Stage III / Euro Stage IIA											
Transmission box shifting gears											1-1 Power Shift T/M / 2-2 Manual Shift T/M											

Engine Model and Main Specification for Option

Engine model	Truck model	Rated power/ Speed (kw/rpm)	Max. torque/ Speed (Nm/rpm)	Engine displacement (L)	Cylinder number - BorexStroke	Emission
QUANCHAI 4C400	CPC20-35-Q22K2 CPCD20-35-Q22K2	39/2550	157/1800	2.67	4-90x105	China Stage II
XINCHANG 4C90BPG-200	CPC20-35-XC3G CPCD20-35-XC3G	40/2550	160/1800-2000	2.67	4-90x105	China Stage II
XINCHANG A498BT1-398	CPC20-35-XC3G CPCD20-35-XC3G	36.8/2500	186/1600-1800	3.17	4-98x105	Euro Stage IIA
GCT K21	CPQ(D)20-30-RC1K2 CP(D)20-30-RC1K2	31.2/2200	143.7/1600	2.065	4-89x83	-
GCT K25	CPQ(D)25-35-RC1K2 CP(D)25-35-RC1K2	37.4/2400	176.5/1600	2.488	4-89x100	-
ISUZU C240	CPC20-35-W5L1K2 CPCD20-35-W5L1K2	35.4/2500	139.9/1800	2.369	4-86x102	China Stage II / Euro Stage IIA
QUANCHAI 4C2-50C41	CPC20-35-Q13K2 CPCD20-35-Q13K2	36.8/2500	170/1400-2000	2.67	4-90x105	China Stage III
Mitsubishi S45	CPC20-35-M1K2 CPCD20-35-M1K2	35.3/2250	177/1700	3.331	4-94x120	China Stage II / Euro Stage IIA

WIDE VIEW MAST

Mast model	Max. lifting height (mm)	Load capacity (load center 500mm) (kg)				Mast overall height (fork to the ground) (mm)				Service weight (kg)				Mast tilting angle (°)
		2t	2.5t	3t	3.5t	2-2.5t	3t/3.5t	2-2.5t	3t/3.5t	2t	2.5t	3t	3.5t	
M200	2000	2000	2500	3000	3500	1500	1570	1620	3210	3560	4170	4490	6/12	
M250	2500	2000	2500	3000	3500	1750	1820	1870	3260	3600	4270	4550	6/12	
M300	3000	2000	2500	3000	3500	2000	2070	2120	3300	3650	4270	4600	6/12	
M330	3300	2000	2500	3000	3500	2150	2220	2270	3330	3670	4290	4630	6/12	
M350	3500	2000	2500	3000	3500	2250	2320	2370	3350	3690	4310	4650	6/12	
M370	3700	2000	2500	3000	3500	2350	2420	2470	3360	3710	4330	4670	6/12	
M400	4000	1950	2350	2850	3300	2550	2620	2670	3440	3790	4410	4750	6/12	
M425	4250	1900	2300	2750	3200	2675	2745	2795	3460	3810	4440	4780	6/12	
M450	4500	1850	2250	2700	3150	2800	2870	2920	3490	3830	4460	4810	6/12	
M500	5000	1700	2100	2550	3000	3050	3120	3170	3530	3880	4510	4860	6/12	
M550	5500	*1600	*2000	*2400	*2850	*2550	*3350	3420	3470	3630	3970	4610	*6/6	
M600	6000	*1500	*1800	*2200	*2600	*2300	3000	3070	3720	4020	4650	5020	*6/6	

Note: (1) \*stands for the rated capacity when the front tyre is double-tyre. (2) When the front tyre of the 3-3.5t truck is double-tyre, the service weight of the truck is the weight in the table plus 110kg.

WIDE VIEW FULL FREE 2-STAGE MAST

Mast model	Max. lifting height (mm)	Load capacity (load center 500mm) (kg)				Mast overall height (fork to the ground) (mm)				Free lifting height (with backrest) (mm)				Service weight (kg)				Mast tilting angle (°)
		2t	2.5t	3t	3.5t	2-2.5t	3t/3.5t	2-2.5t	3t/3.5t	2t	2.5t	3t	3.5t	2t	2.5t	3t	3.5t	
2M200	2000	2000	2500	3000	3500	1500	1570	1620	3000	3400	443	5040	3580	4190	4510	6/12		
2M250	2500	2000	2500	3000	3500	1790	1820	1870	3050	3450	443	5040	3630	4240	4560	6/12		
2M300	3000	2000	2500	3000	3500	2000	2070	2120	3080	3480	443	5040	3680	4290	4620	6/12		
2M330	3300	2000	2500	3000	3500	2150	2220	2270	3100	3500	443	5040	3730	4340	4670	6/12		
2M350	3500	2000	2500	3000	3500	2250	2320	2370	3120	3520	443	5040	3780	4390	4720	6/12		
2M370	3700	2000	2500	3000	3500	2350	2420	2470	3140	3540	443	5040	3830	4440	4770	6/12		
2M400	4000	2000	2350	2850	3300	2550	2620	2670	3160	3560	443	5040	3880	4490	4820	6/12		
2M425	4250	1900	2300	2750	3200	2675	2745	2795	3180	3580	443	5040	3930	4540	4870	6/12		
2M450	4500	1850	2250	2700	3150	2800	2870	2920	3200	3600	443	5040	3980	4590	4920	6/12		
2M500	5000	1700	2100	2550	3000	3050	3120	3170	3250	3650	443	5040	4030	4640	4970	6/12		
2M550	5500	*1600	*2000	*2400	*2850	*2550	*3350	3420	3470	3630	443	5040	4080	4690	5020	6/6		
2M600	6000	*1500	*1800	*2200	*2600	*2300	3000	3070	3720	3500	443	5040	4130	4740	5070	6/6		

Note: (1) \*stands for the rated capacity when the front tyre is double-tyre. (2) When the front tyre of the 2-3.5t truck is double-tyre, the service weight of the truck is the weight in the table plus 110kg.

WIDE VIEW FULL FREE 3-STAGE MAST

Mast model	Max. lifting height (mm)	Load capacity (load center 500mm) (kg)				Mast overall height (fork to the ground) (mm)				Free lifting height (with backrest) (mm)				Service weight (kg)				Mast tilting angle (°)
		2t	2.5t	3t	3.5t	2-2.5t	3t/3.5t	2-2.5t	3t/3.5t	2t	2.5t	3t	3.5t	2t	2.5t	3t	3.5t	
2SM300	3000	2000	2400	2900	3500	1600	1670	1720	3000	3400	440	5000	3600	4210	4720	6/6		
2SM400	4000	1900	2400	2900	3500	1900	2020	2070	3050	3450	440	5000	3650	4260	4770	6/6		
2SM425	4250	1850	2350	2850	3400	2050	2120	2170	3080	3480	440	5000	3700	4310	4820	6/6		
2SM450	4500	1800	2300	2800	3300	2150	2220	2270	3100	3500	440	5000	3750	4360	4870	6/6		
2SM470	4700	1750	2250	2750	3200	2250	2320	2370	3120	3520	440	5000	3800	4410	4920	6/6		
2SM480	4800	1700	2200	2700	3100	2350	2420	2470	3140	3540	440	5000	3850	4460	4970	6/6		
2SM500	5000	1650	2150	2650	3000	2450	2520	2570	3160	3560	440	5000	3900	4510	5020	6/6		
2SM540	5400	1500	2000	2500	3000	2600	2670	2720	3200	3600	440	5000	3950	4560	5070	6/6		
2SM600	6000	*1400	*1700	*2100	*2500	2400	2470	2520	3240	3640	440	5000	4000	4610	5120	6/6		

Note: (1) \*stands for the rated capacity when the front tyre is double-tyre. (2) When the front tyre of the 2-3.5t truck is double-tyre, the service weight of the truck is the weight in the table plus 110kg.