

## I. 双启动,双熄火控制 (7-8层车型) Dual-starting and dual flameout (Truck for 7-8 layers)

- ▶ 该车型具有双启动(钥匙启动,屏幕开关启动),双熄火控制(钥匙熄火,屏幕开关熄火),实现人机操纵的方便性。
- ▶ The truck has dual starting (key starting, screen switch starting) and dual flameout (key flameout and screen switch starting) controls to facilitate operation.



模块化设计,减少故障点,提高可靠性  
防尘、防水

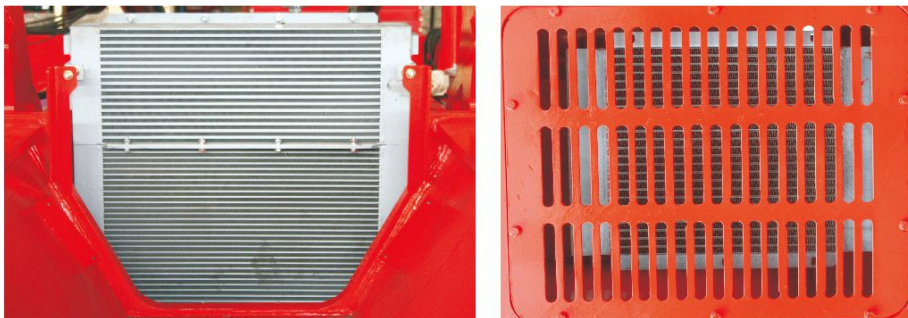
Modular design to reduce the fault points and raise the reliability  
Dust and water resistance





## J. 散热系统 Heat radiation system

- ▶ 采用知名品牌散热器，该散热器应用油水复合技术，单层布置，便于冲洗和保养，优越的散热性能确保各系统部件都能在良好的温度条件下工作，有效的降低了整车故障率，提高整车可靠性；  
发动机水、中冷、变速箱油各自独立的复合散热器；  
自动钎焊技术，铝质散热器，质量可靠，散热功率大。
- ▶ Well-known brand radiator is used, which applies water and oil compound technology, is arranged in single layer and facilitates flushing and maintenance. The superior heat dissipation performance ensures that the parts of each system can work under the good temperature condition, thus effectively cutting down the fault rate and raising the reliability of the whole car.



## K. 驾驶室内座椅采用全悬浮减震结构，可做全方位的调节 The drive seat in the drive cab adopts full suspension and vibration attenuation structure and can be adjusted in all directions

- ▶ 驾驶室内座椅采用全悬浮减震结构，可做全方位的调节；各操作踏板、手柄位置按人体工程学原理设计，可大大降低劳动强度；加大司机室设计，四面全明玻璃，视野开阔，配冷暖空调。
- ▶ The drive seat in the drive cab adopts full suspension and vibration attenuation structure and can be adjusted in all directions. Each operation pedals and handle position are designed according to the principle of human engineering and can greatly reduce the labor intensity. The drive cab is designed with transparent glasses on all sides and wide field of vision and is furnished with air conditioner as well.





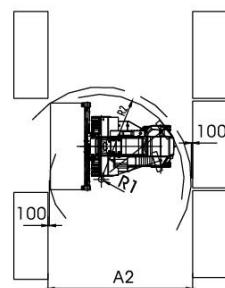
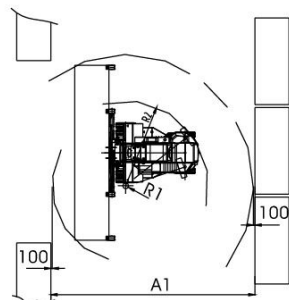
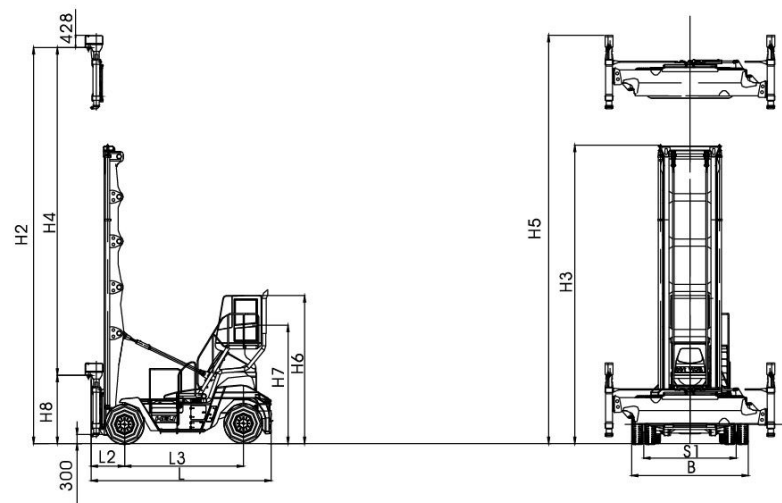
利用优化设计手段进行加宽门架设计，改善了整车的视野，同时增加了门架的抗扭性，起升下降更加平稳可靠。

To broaden the gantry design by making use of the optimum design means ,which improves the field of vision of the whole car and strengthens the resistance to torsion of gantry as well so that the ascending and descending are more smooth and reliable.

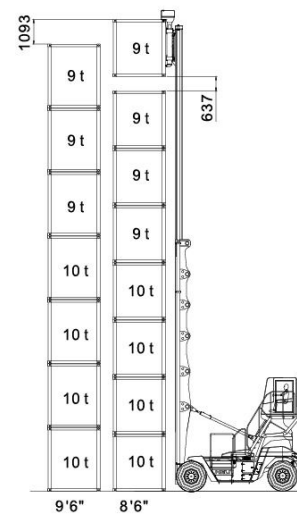


## L. 吊具 Spreader

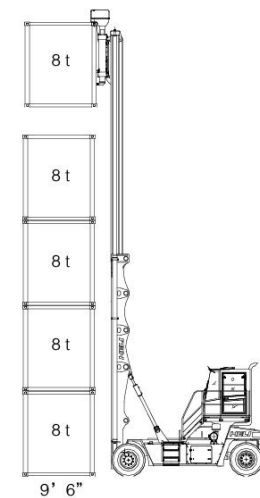
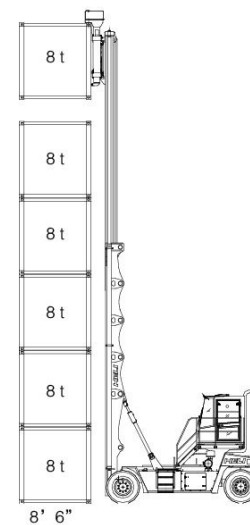
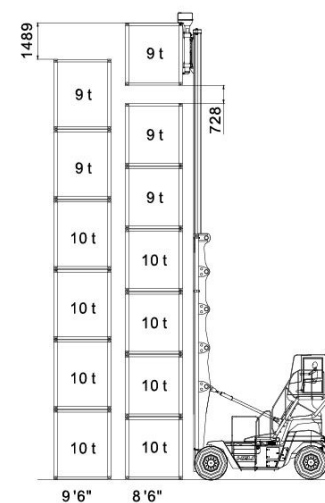
- ▶ **2-3层车型**  
吊具为合力针对20英尺集装箱及灌箱的吊装专门设计，整体采用优质结构钢焊接，强度高、视野好。
- ▶ **Truck for 2-3 layers**  
Spreader is specially designed for 20 feet containers and pouring boxes. It is welded by high quality structural steel and it has good strength and view.
- ▶ **5-8层车型**  
采用瑞典ELME公司的新型吊具，该吊具采用优质钢制造，单筒式结构，强度高，视野好，带安全互锁功能。可实现侧移、伸缩和开闭锁等动作，并有吊具状态指示，辅助灯光照明等功能。
- ▶ **Truck for 5-8 layers**  
The new type spreader from ELME Company, Sweden is used, which is made with high quality steel and of single-tube structure and has high strength, good field of vision and safe interlocking function. It can realize the actions of sidesway, expansion, contraction, unlocking and locking etc and has the functions of spreader status indicator and auxiliary lamplight lighting etc.



整车负荷图

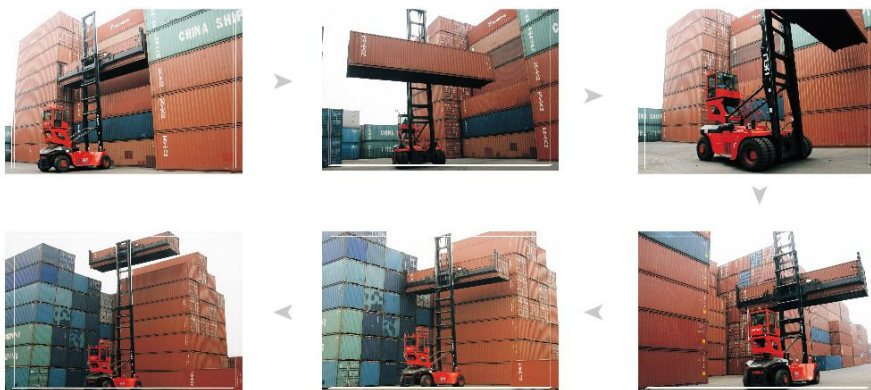


整车负荷图

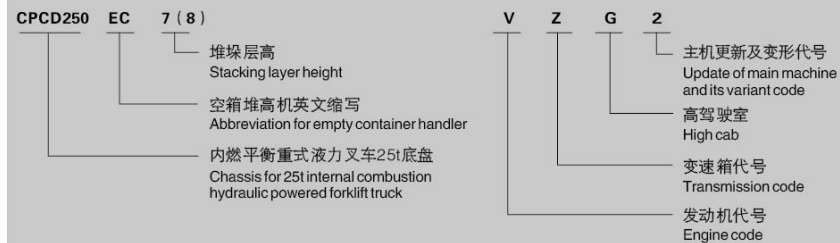




## M. 现场使用灵活，轻巧 Flexible and handy operation on site



## N. 型号说明 Model description



性能参数 Performance specifications					
型号	Model			CPCD120EC2-WX1 CPCD120EC2-CU	CPCD120EC3-WX1 CPCD120EC3-CU
额定起重量	Rated capacity	Q	kg	4500	
载荷中心距	Load center	C	mm	1220	
最大堆高层数	Max. handling layers			2(8" 6' / 9" 6' )	3(8" 6)
可起吊集装箱长度	Length of container lifted		ft	20	
最大转锁高度	Max. Rotary lock height	H2	mm	6245	8245
最小转锁高度	Min. rotary lock height	H8	mm	2245	
门架倾角(前后)	Mast tilt angle (front/rear)		deg	6/12	3/6
吊具侧移量	Lateral displacement of spreader		mm	± 150	
最大行驶速度(空载/满载)	Stall speed		km/h	29/27	
最大起升速度(满载/空载)	Max. lifting speed (loaded/unloaded)		mm/s	350/370	
最大下降速度(满载/空载)	Max. descending speed (loaded/unloaded)		mm/s	300 ≤ 实测值 ≤ 600	
爬坡度(满载)	Gradeability (loaded)		%	28	
轴距	Wheel base	L3	mm	3000	
轮距 前/后	Tread (front/rear)	S1/S2	mm	1950/2050	
长(带属具)	Length(with attachment)	L	mm	5060	
宽	Width	B		2520	
高(门架缩回)	Height ( mast retraction )	H3	mm	3715	4815
最小转弯半径	Min. turning radius		mm	5000	
发动机 Engine 柴油机 Diesel engine	制造商/型号	Manufacturer/Model		锡柴CA6DF3/CUMMINS QSB6.7	
	额定功率/额定转速	Rated output/Speed	kW/rpm	118/2200/119/2300	
	最大扭矩/转速	Max. Torque/Speed	Nm/rpm	640/1300-1700/732/1500	
变速箱 Gearbox (变矩器) Torque converter	制造商/型号	Manufacturer/Model		合力自制变速箱	
	变速档数(前进/后退)	Shift gears (forward/backward)		2/2	
	换挡型式	Shift type		电液换挡	
轮胎 Tire	前轮规格	Front wheel size		11.00-20-18PR	
	后轮规格	Rear wheel size		11.00-20-18PR	
	气压(前轮/后轮)	Air pressure (front /rear)	kPa	900/900	

性能参数 Performance specifications							
型号		Model				CPCD180EC5-CZ	CPCD180EC6-CZ
额定起重量		Rated capacity		Q	kg	见负荷图 See load diagram	
载荷中心距		Load center		C	mm	1220	
最大堆高层数		Max. handling layers				5(8" 6' /9" 6' )	6(8" 6)
可起吊集装箱长度		Length of container lifted			ft	20/40	
最大转锁高度		Max. Rotary lock height		H2	mm	15220	16300
最小转锁高度		Min. rotary lock height		H8	mm	2300	
门架倾角 (前后)		Mast tilt angle (front/rear)			deg	3/3	
吊具侧移量		Lateral displacement of spreader			mm	± 300	
最大行驶速度 (空载/满载)		Stall speed			km/h	27/25	
最大起升速度 (满载/空载)		Max. lifting speed (loaded/unloaded)			mm/s	420/460	
最大下降速度 (满载/空载)		Max. descending speed (loaded/unloaded)			mm/s	300≤实测值≤600	
爬坡度 (满载)		Gradeability (loaded)			%	30	
轴距		Wheel base		L3	mm	4000	
轮距 前/后		Tread (front/rear)		S1/S2	mm	2800/2000	
长 (带属具)		Length(with attachment)		L	mm	6000	
宽		Width		B		6065	
高 (门架缩回)		Height ( mast retraction )		H3	mm	8839	9379
最小转弯半径		Min. turning radius			mm	5400	
发动机 Engine 柴油机 Diesel engine	制造商/型号		Manufacturer/Model			CUMMINS/QSB6.7	
	额定功率/额定转速		Rated output/Speed		kW/rpm	142/2300	
	最大扭矩/转速		Max. Torque/Speed		Nm/rpm	929/1500	
变速箱 Gearbox (变矩器) Torque converter	制造商/型号		Manufacturer/Model			ZF/3WG171	
	变速档数 (前进/后退)		Shift gears (forward/backward)			3/3	
	换挡型式		Shift type			自动Automatic	
轮胎 Tire	前轮规格		Front wheel size			12.00-20-20PR	
	后轮规格		Rear wheel size			12.00-20-20PR	
	气压 (前轮/后轮)		Air pressure (front/rear)		kPa	880/880	

性能参数 Performance specifications							
型号		Model				CPCD250EC7-VZG2	CPCD250EC8-VZG2
额定起重量		Rated capacity		Q	kg	见负荷图 See load diagram	
载荷中心距		Load center		C	mm	1220	
最大堆高层数		Max. handling layers				7(8'6")	8(8'6")
可起吊集装箱长度		Length of container lifted			ft	20/40	
最大转锁高度		Max. Rotary lock height		H2	mm	18865	21365
最小转锁高度		Min. rotary lock height		H8	mm	2255/2300	
门架倾角(前后)		Mast tilt angle (front/rear)			deg	3/3	
吊具侧移量		Lateral displacement of spreader			mm	± 500/ ± 600	
最大行驶速度(空载/满载)		Stall speed			km/h	24/22	
最大起升速度(满载/空载)		Max. lifting speed (loaded/unloaded)			mm/s	520/600	
最大下降速度(满载/空载)		Max. descending speed (loaded/unloaded)			mm/s	300≤实测值≤600	
爬坡度(满载)		Gradeability (loaded)			%	28	
轴距		Wheel base		L3	mm	4250	
轮距 前/后		Tread (front/rear)		S1/S2	mm	3290/2395	
长(带属具)		Length(with attachment)		L	mm	6440	
宽		Width		B		6065	
高(门架缩回)		Height ( mast retraction )		H3	mm	10370	11620
最小转弯半径		Min. turning radius			mm	5920	
发动机 Engine 柴油机 Diesel engine	制造商/型号		Manufacturer/Model			Volvo /TAD851VE	
	额定功率/额定转速		Rated output/Speed		kW/rpm	185/2200	
	最大扭矩/转速		Max. Torque/Speed		Nm/rpm	1160/1350	
变速箱 Gearbox (变矩器) Torque converter	制造商/型号		Manufacturer/Model			ZF/3WG211	
	变速档数(前进/后退)		Shift gears (forward/backward)			3/3	
	换挡型式		Shift type			自动Automatic	
轮胎 Tire	前轮规格		Front wheel size			14.00-24-28PR	
	后轮规格		Rear wheel size			14.00-24-28PR	
	气压(前轮/后轮)		Air pressure (front/rear)		kPa	880/880	

- 合力产品不断更新和改进中，合力保留在没有事先告知用户的情况下，更改整体参数及设计的权利。
- 文中插图不一定是该机型的标准款，插图中产品配置和外观颜色与实际机型存在差异，以实物为准。
- Our products are constantly updated and improved. Parameters and design are subject to change without prior notice.
- The configuration and color of the products in figures may be different from the actual delivered model. Please in kind prevails.